

Discharge Measurement Summary

Date Generated: Thu Sep 26 2024

File Information

File Name 357001.037.WAD
Start Date and Time 2021/04/14 14:52:35

Site Details

Site Name ECANAL
Operator(s) SLP

System Information

Sensor Type FlowTracker
Serial # P3673
CPU Firmware Version 3.9
Software Ver 2.30
Mounting Correction 0.0%

Units (English Units)

Distance ft
Velocity ft/s
Area ft²
Discharge cfs

Discharge Uncertainty

Category	ISO	Stats
Accuracy	1.0%	1.0%
Depth	0.2%	0.8%
Velocity	0.4%	0.9%
Width	0.1%	0.1%
Method	1.6%	-
# Stations	2.0%	-
Overall	2.8%	1.6%

Summary

Averaging Int. 40 # Stations 25
Start Edge REW Total Width 18.500
Mean SNR 30.2 dB Total Area 17.132
Mean Temp 50.54 °F Mean Depth 0.926
Disch. Equation Mid-Section Mean Velocity 2.2466
Total Discharge 38.4888

Measurement Results

St	Clock	Loc	Method	Depth	%Dep	MeasD	Vel	CorrFact	MeanV	Area	Flow	%Q
0	14:52	12.00	None	1.230	0.0	0.0	0.0000	1.00	1.9619	0.492	0.9651	2.5
<i>1</i>	<i>14:52</i>	<i>12.80</i>	<i>0.6</i>	<i>1.180</i>	<i>0.6</i>	<i>0.472</i>	<i>1.9619</i>	<i>1.00</i>	<i>1.9619</i>	<i>0.944</i>	<i>1.8520</i>	<i>4.8</i>
2	14:53	13.60	0.6	1.200	0.6	0.480	2.5213	1.00	2.5213	0.960	2.4203	6.3
3	14:55	14.40	0.6	1.120	0.6	0.448	2.3957	1.00	2.3957	0.896	2.1463	5.6
4	14:56	15.20	0.6	1.120	0.6	0.448	2.4800	1.00	2.4800	0.896	2.2219	5.8
5	14:57	16.00	0.6	1.020	0.6	0.408	2.5243	1.00	2.5243	0.816	2.0595	5.4
6	14:58	16.80	0.6	0.920	0.6	0.368	2.6473	1.00	2.6473	0.736	1.9480	5.1
7	15:02	17.60	0.6	0.820	0.6	0.328	2.6512	1.00	2.6512	0.656	1.7387	4.5
8	15:03	18.40	0.6	0.820	0.6	0.328	2.6906	1.00	2.6906	0.656	1.7645	4.6
9	15:04	19.20	0.6	0.820	0.6	0.328	2.5118	1.00	2.5118	0.656	1.6472	4.3
10	15:05	20.00	0.6	0.820	0.6	0.328	2.5676	1.00	2.5676	0.656	1.6838	4.4
11	15:06	20.80	0.6	0.800	0.6	0.320	2.6293	1.00	2.6293	0.640	1.6822	4.4
12	15:07	21.60	0.6	0.780	0.6	0.312	2.5197	1.00	2.5197	0.624	1.5717	4.1
13	15:09	22.40	0.6	0.850	0.6	0.340	2.4380	1.00	2.4380	0.680	1.6577	4.3
14	15:10	23.20	0.6	0.800	0.6	0.320	2.4439	1.00	2.4439	0.640	1.5636	4.1
15	15:11	24.00	0.6	0.800	0.6	0.320	2.3136	1.00	2.3136	0.640	1.4802	3.8
16	15:12	24.80	0.6	0.720	0.6	0.288	2.3268	1.00	2.3268	0.576	1.3403	3.5
17	15:13	25.60	0.6	0.750	0.6	0.300	2.2976	1.00	2.2976	0.600	1.3783	3.6
18	15:14	26.40	0.6	0.850	0.6	0.340	2.0919	1.00	2.0919	0.680	1.4223	3.7
19	15:16	27.20	0.6	0.810	0.6	0.324	2.0354	1.00	2.0354	0.648	1.3188	3.4
20	15:20	28.00	0.6	0.940	0.6	0.376	1.9491	1.00	1.9491	0.752	1.4655	3.8
21	15:23	28.80	0.6	1.020	0.6	0.408	1.8294	1.00	1.8294	0.816	1.4926	3.9
22	15:24	29.60	0.6	1.120	0.6	0.448	1.5272	1.00	1.5272	0.674	1.0287	2.7
<i>23</i>	<i>15:25</i>	<i>30.00</i>	<i>0.6</i>	<i>1.160</i>	<i>0.6</i>	<i>0.464</i>	<i>0.7982</i>	<i>1.00</i>	<i>0.7982</i>	<i>0.524</i>	<i>0.4180</i>	<i>1.1</i>
24	15:25	30.50	None	1.110	0.0	0.0	0.0000	1.00	0.7982	0.277	0.2215	0.6

Rows in italics indicate a QC warning. See the Quality Control page of this report for more information.

Discharge Measurement Summary

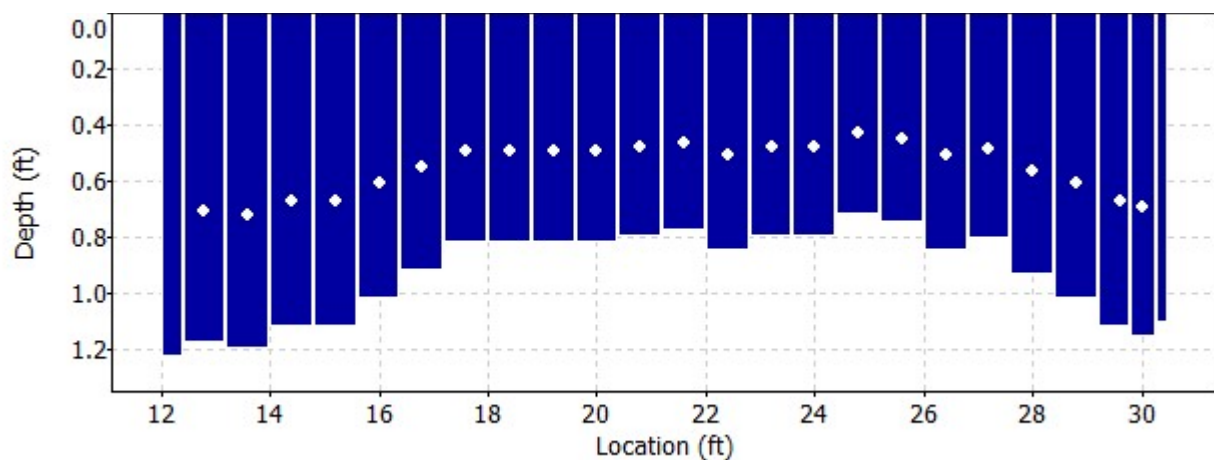
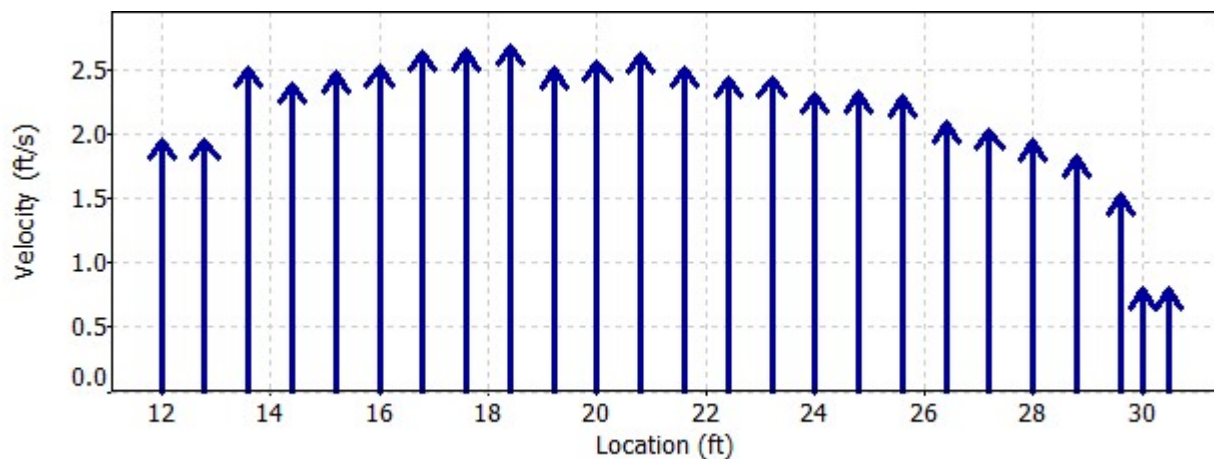
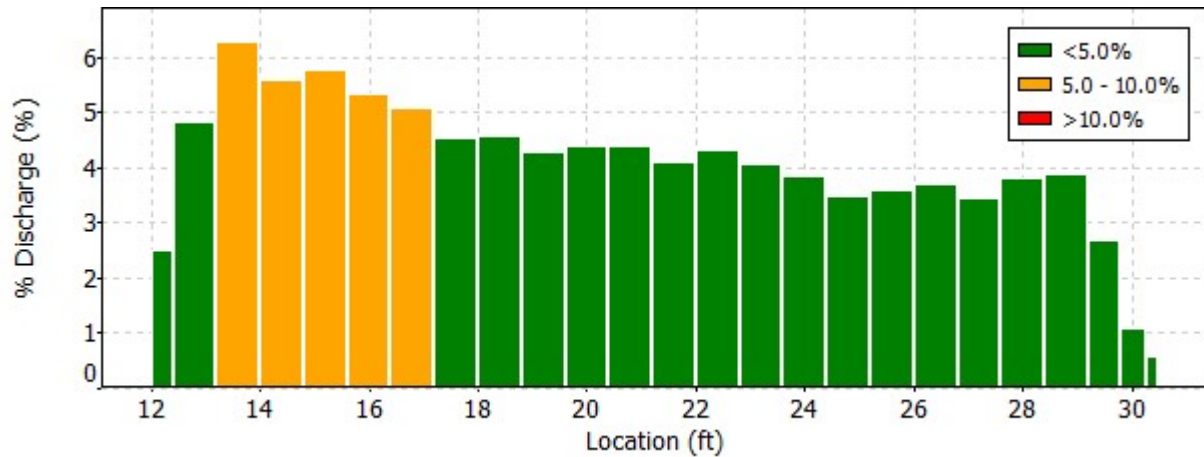
Date Generated: Thu Sep 26 2024

File Information

File Name 357001.037.WAD
Start Date and Time 2021/04/14 14:52:35

Site Details

Site Name ECANAL
Operator(s) SLP



Discharge Measurement Summary

Date Generated: Thu Sep 26 2024

File Information

File Name 357001.037.WAD
Start Date and Time 2021/04/14 14:52:35

Site Details

Site Name ECANAL
Operator(s) SLP

Quality Control

St	Loc	%Dep	Message
1	12.80	0.6	High standard error: 0.113
23	30.00	0.6	High number of spikes: 5
		0.6	High SNR variation during measurement: 3.9,5.2

Discharge Measurement Summary

Date Generated: Thu Sep 26 2024

File Information

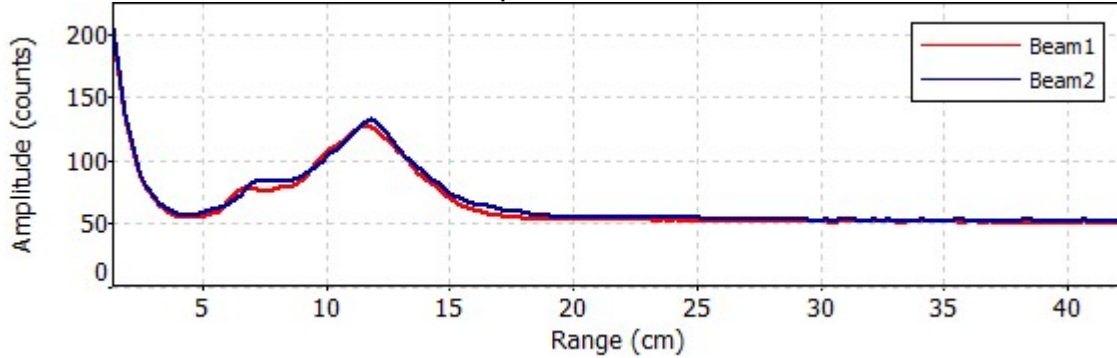
File Name 357001.037.WAD
Start Date and Time 2021/04/14 14:52:35

Site Details

Site Name ECANAL
Operator(s) SLP

Automatic Quality Control Test (BeamCheck)

Wed Apr 14 14:49:39 PST 2021



- ✓ Noise level check - Pass
- ✓ SNR check - Pass
- ✓ Peak location check - Pass
- ✓ Peak shape check - Pass